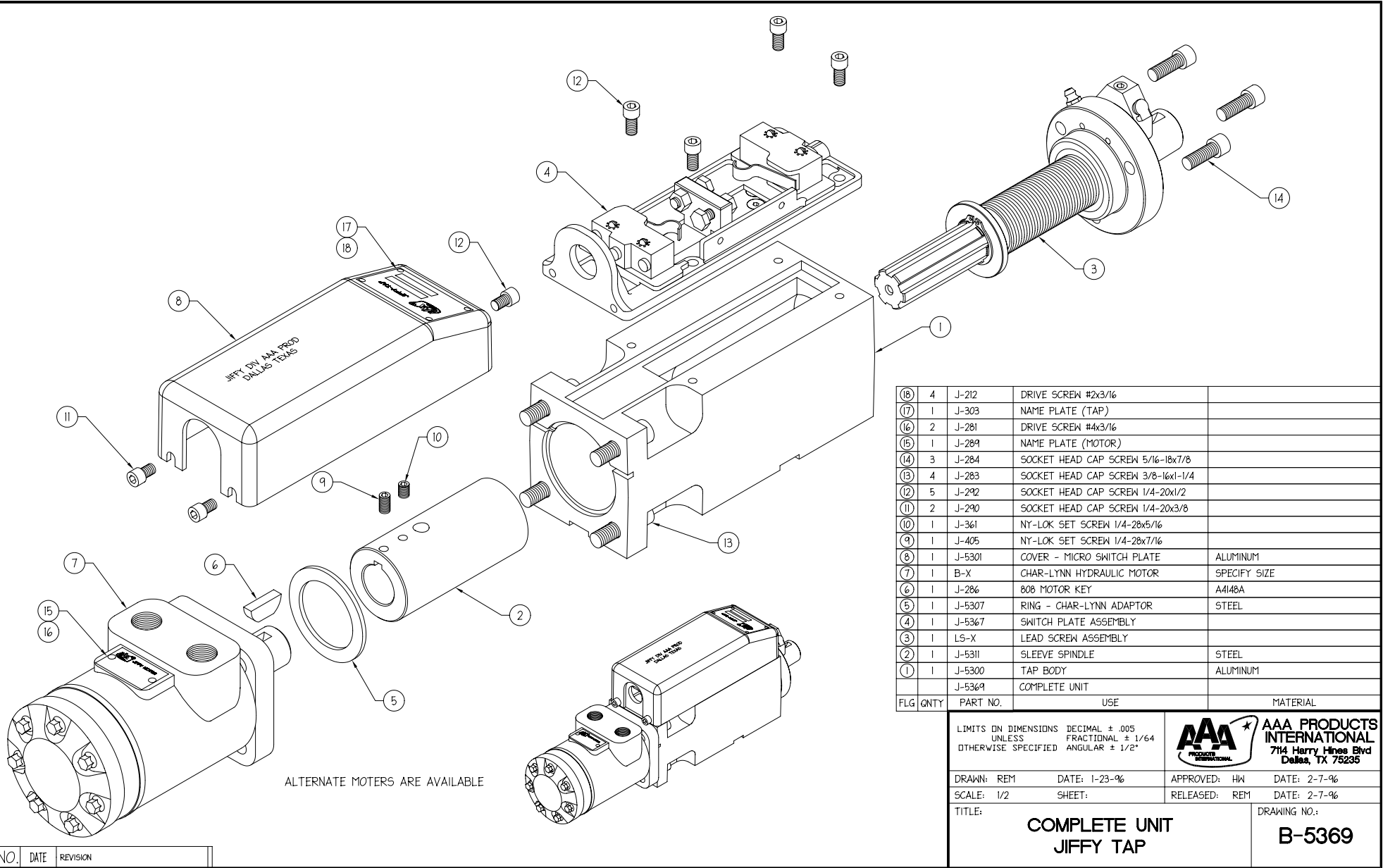


# Jiffy-Tap (Standard Assembly)



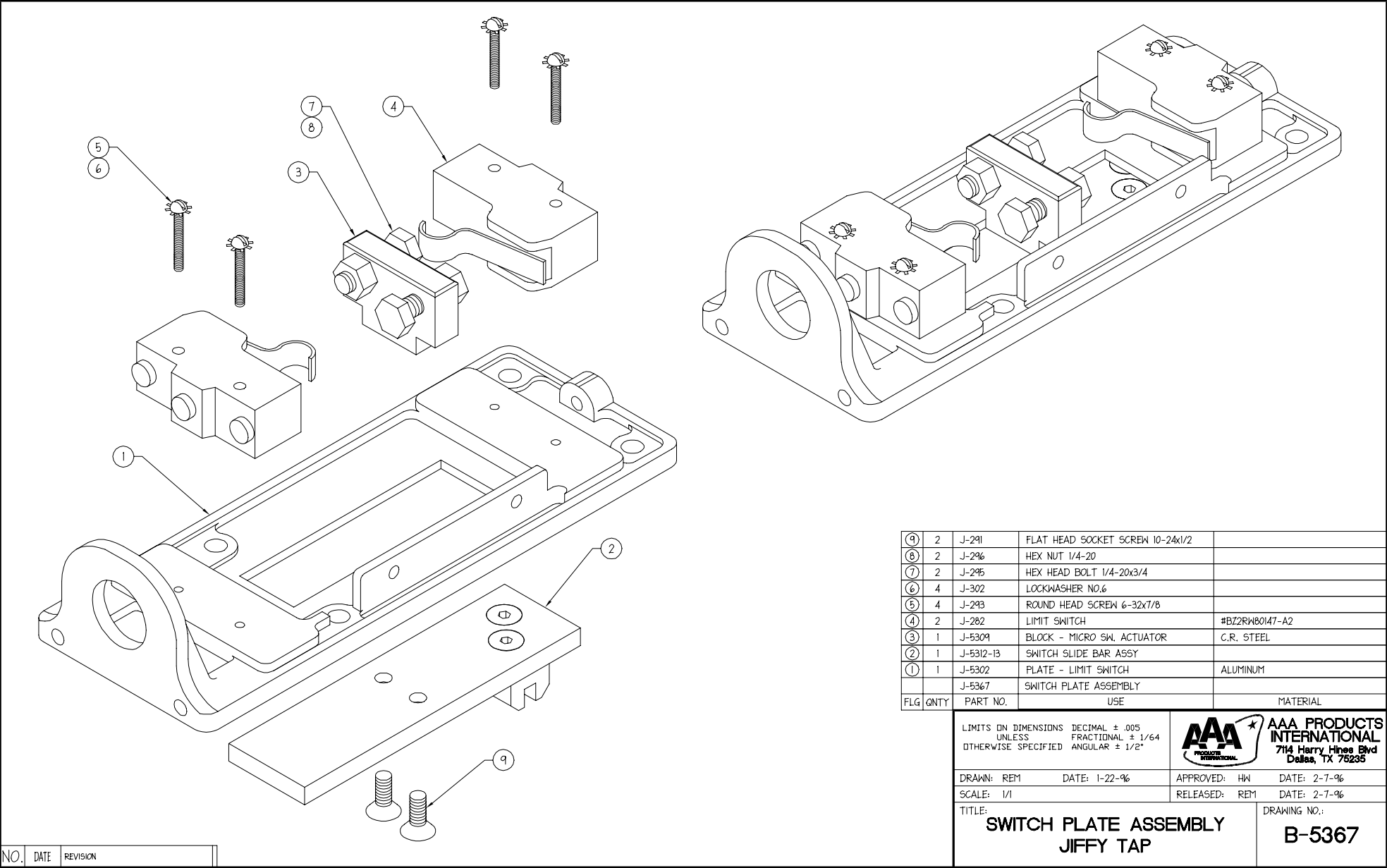
AAA Products International on-line product information. Consult factory or local distributor for more information.

Bulletin A-241-1 - November 30, 2001

TAP  
MENU

MAIN  
MENU

# Jiffy-Tap (Standard Assembly)



⑨	2	J-291	FLAT HEAD SOCKET SCREW 10-24x1/2	
⑧	2	J-296	HEX NUT 1/4-20	
⑦	2	J-295	HEX HEAD BOLT 1/4-20x3/4	
⑥	4	J-302	LOCKWASHER NO.6	
⑤	4	J-293	ROUND HEAD SCREW 6-32x7/8	
④	2	J-282	LIMIT SWITCH	#BZ2RW80147-A2
③	1	J-5309	BLOCK - MICRO SW. ACTUATOR	C.R. STEEL
②	1	J-5312-13	SWITCH SLIDE BAR ASSY	
①	1	J-5302	PLATE - LIMIT SWITCH	ALUMINUM
			J-5367	SWITCH PLATE ASSEMBLY
FLG	QNTY	PART NO.	USE	MATERIAL

LIMITS ON DIMENSIONS  
UNLESS OTHERWISE SPECIFIED  
DECIMAL ± .005  
FRACTIONAL ± 1/64  
ANGULAR ± 1/2°



DRAWN: REM      DATE: 1-22-96      APPROVED: HW      DATE: 2-7-96  
SCALE: 1/1      RELEASED: REM      DATE: 2-7-96

TITLE: **SWITCH PLATE ASSEMBLY  
JIFFY TAP**      DRAWING NO.: **B-5367**

NO.	DATE	REVISION
-----	------	----------

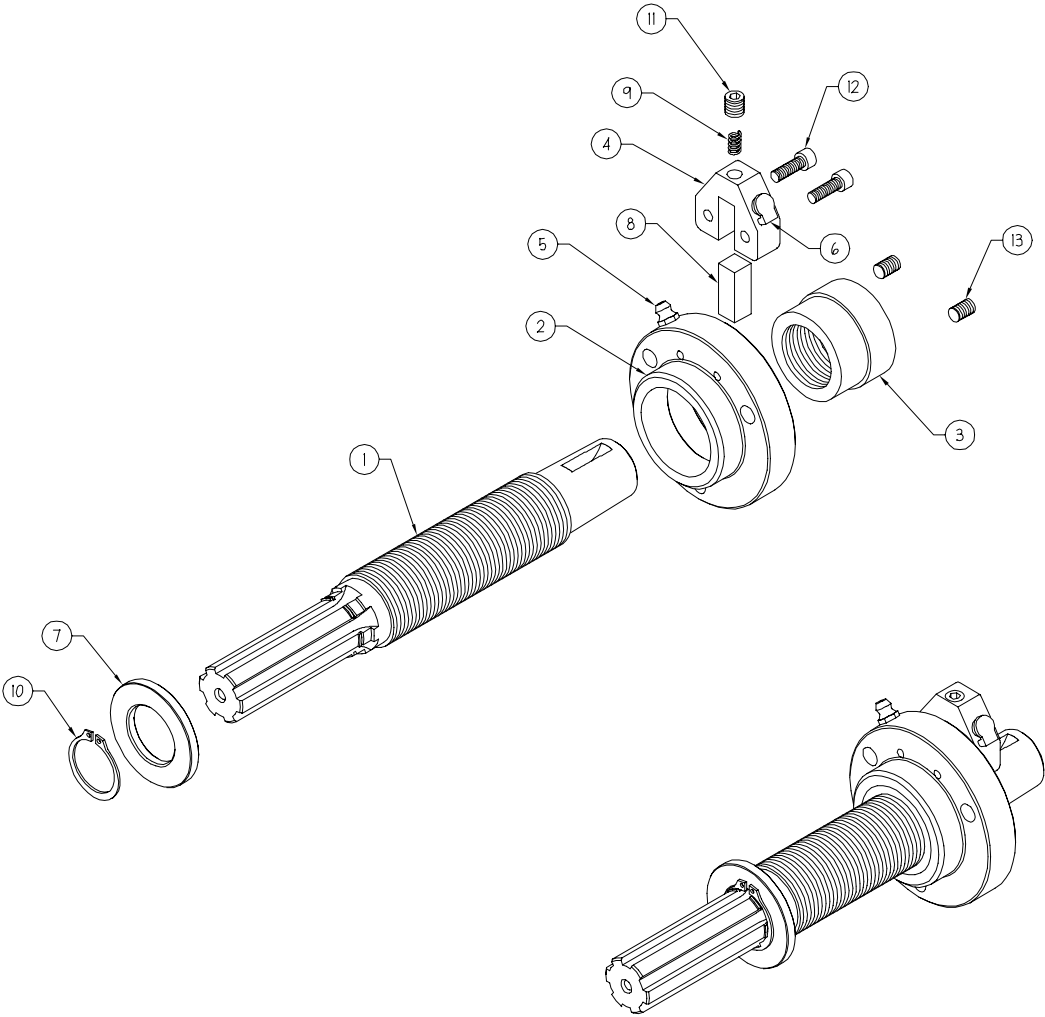
AAA Products International on-line product information. Consult factory or local distributor for more information.

Bulletin A-241-2 - November 30, 2001

TAP  
MENU

MAIN  
MENU

# Jiffy-Tap (Standard Assembly)



NOTES:  
 1. WHEN ORDERING SPECIFY LEAD SCREW PITCH.  
 (EXAMPLE - 14 PITCH LEAD SCREW, ORDER LS-14)  
 2. SPINDLE, HOUSING AND NUT ARE SOLD AS MATCH SET ONLY.

FLG	QNTY	PART NO.	USE	MATERIAL
13	2	J-297	SET SCREW 1/4-20x3/8	
12	2	J-162	SOCKET HEAD CAP SCREW 10-24x5/8	
11	1	J-8	SET SCREW 5/16-18x5/16	
10	1	J-288	RETAINING RING	STEEL
9	1	J-308	SPRING FOR WIPER	MUSIC WIRE
8	1	J-309	FELT FOR WIPER	
7	1	J-5308	DISC - SWITCH FORK	C.R. STEEL
6	1	J-369	SHOULDER OILER	
5	1	J-357	GREASE FITTING	
4	1	J-5315	WIPER HOUSING	ALUMINUM
3	1	J-5306	NUT - LEAD SCREW	ALLOY BRONZE
2	1	J-5304	HOUSING - LEAD SCREW	ALUMINUM
1	1	J-5303	SPINDLE - STANDARD	STEEL
		LS-X	LEAD SCREW ASSEMBLY	

LIMITS ON DIMENSIONS  
 UNLESS OTHERWISE SPECIFIED  
 DECIMAL ± .005  
 FRACTIONAL ± 1/64  
 ANGULAR ± 1/2°



DRAWN: REM DATE: 1-22-96 APPROVED: HW DATE: 2-7-96  
 SCALE: 1/2 RELEASED: REM DATE: 2-7-96

TITLE: **LEAD SCREW ASSEMBLY  
 JIFFY TAP** DRAWING NO.: **B-5368**

NO.	DATE	REVISION

AAA Products International on-line product information. Consult factory or local distributor for more information.

Bulletin A-241-3 - November 30, 2001

TAP  
MENU

MAIN  
MENU