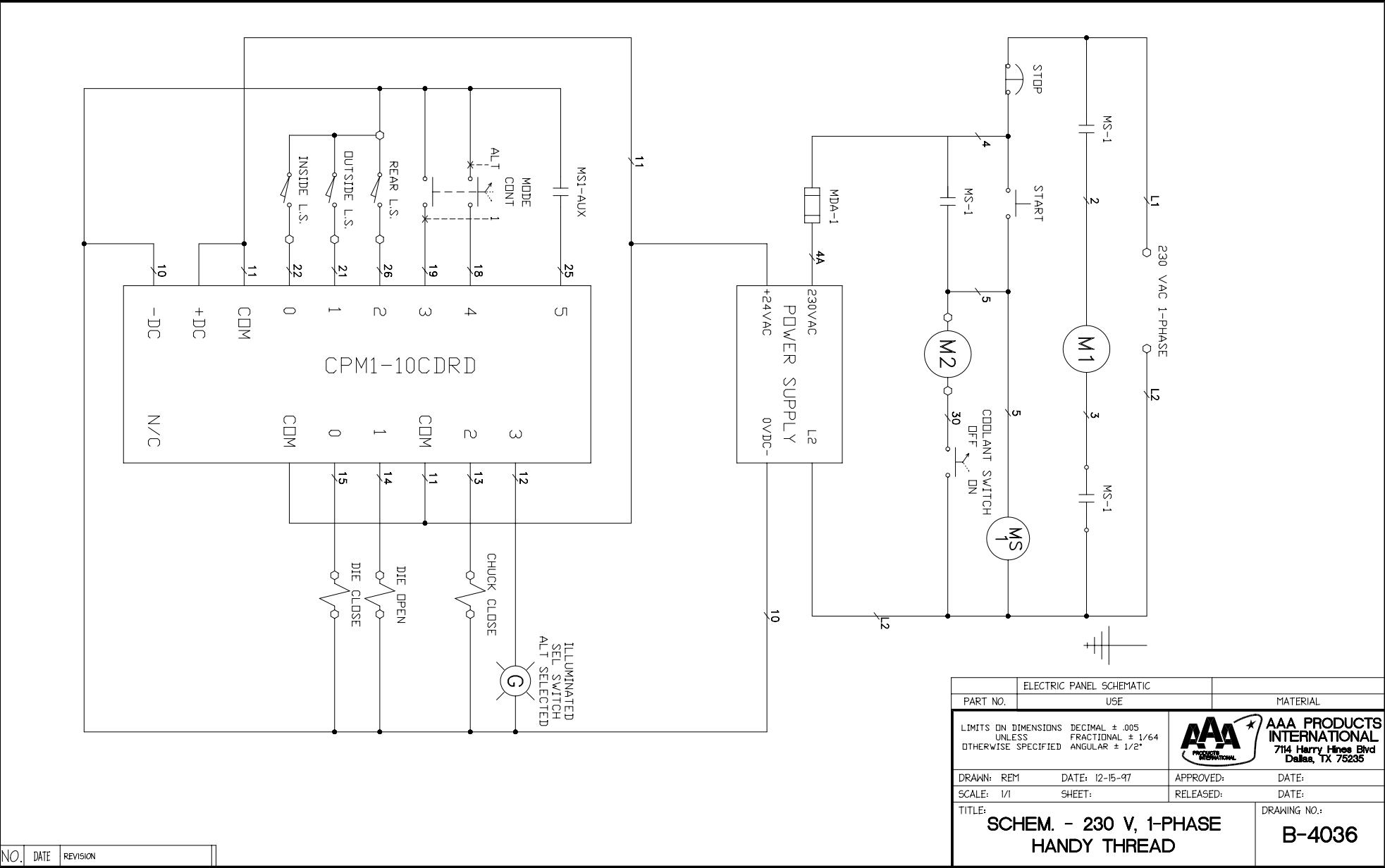



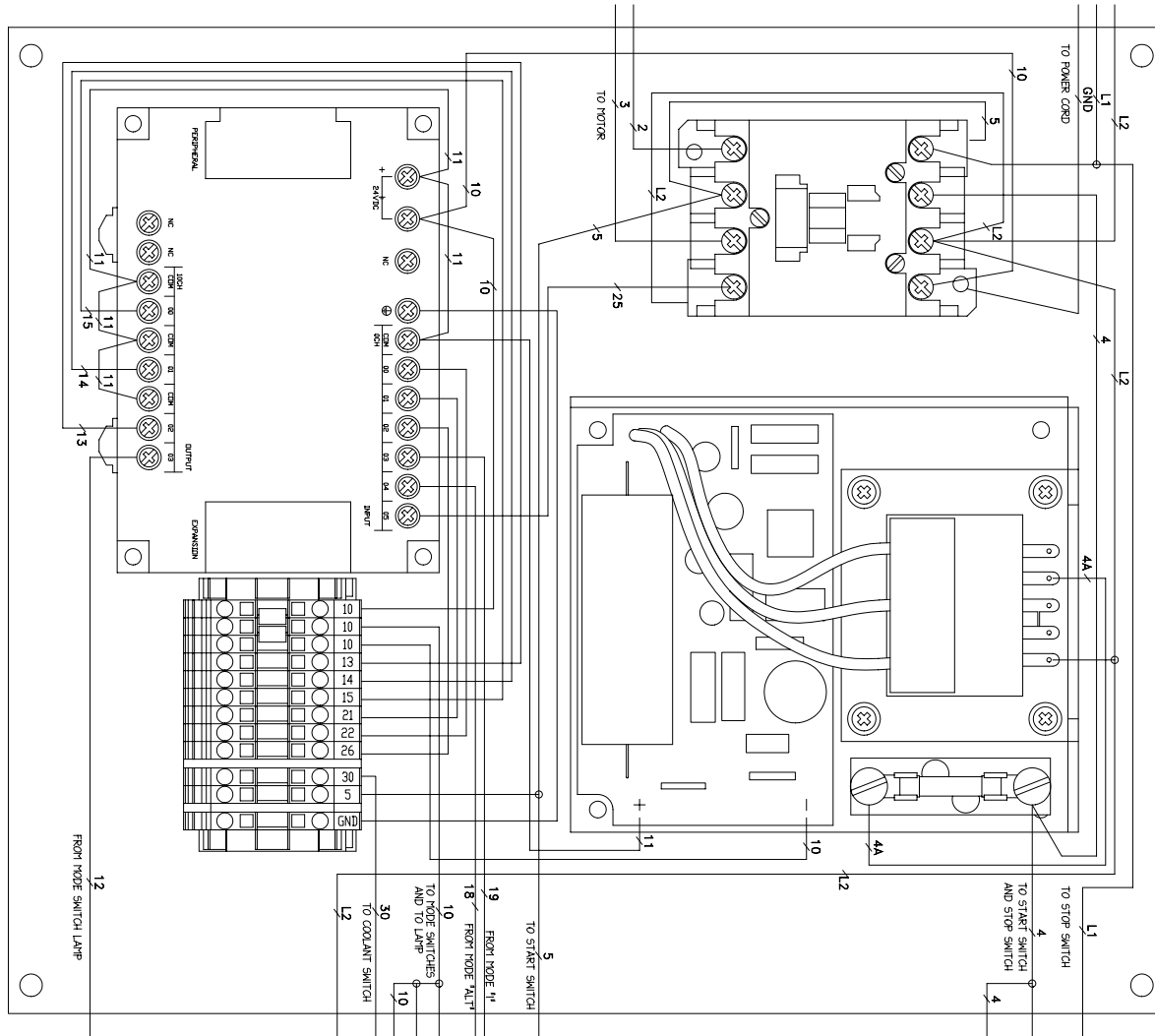
HT-1P Electrical Information (Standard 230 Volt - Single Phase)



ELECTRIC PANEL SCHEMATIC		MATERIAL	
PART NO.	USE		
LIMITS ON DIMENSIONS UNLESS OTHERWISE SPECIFIED		 AAA PRODUCTS INTERNATIONAL 7114 Harry Hines Blvd Dallas, TX 75235	
DECIMAL ± .005	FRACTIONAL ± 1/64	APPROVED:	DATE:
OTHERWISE SPECIFIED	ANGULAR ± 1/2"	RELEASED:	DATE:
DRAWN: REM		DATE: 12-15-97	
SCALE: 1/1		SHEET:	
TITLE:		DRAWING NO.:	
SCHEM. - 230 V, 1-PHASE HANDY THREAD		B-4036	

NO.	DATE	REVISION

HT-1P Electrical Information (Standard 230 Volt - Single Phase)




WIRE COLOR CODE

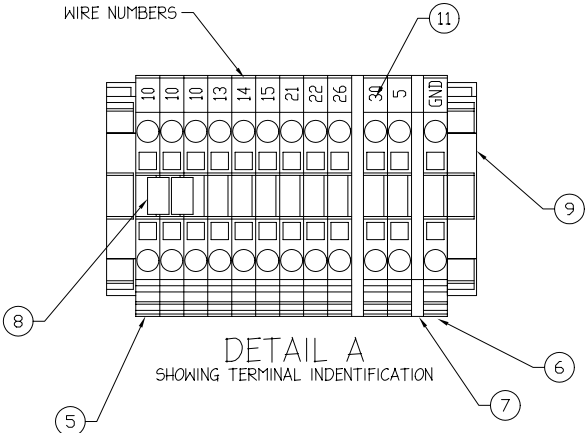
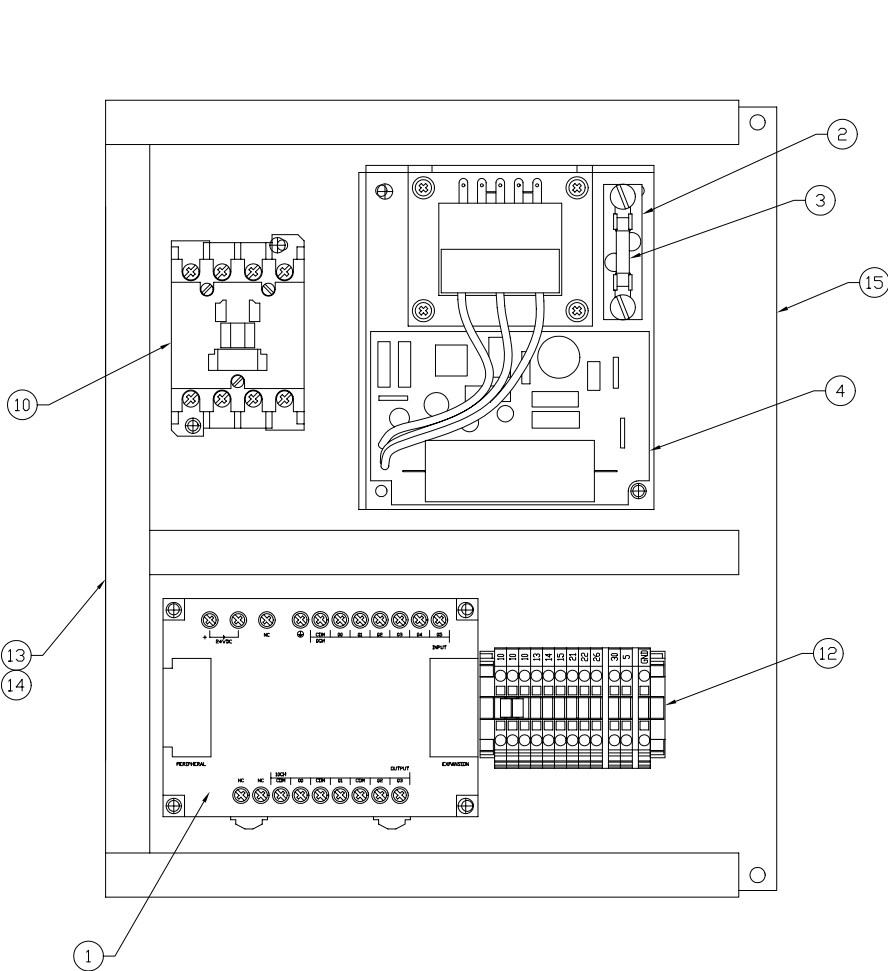
RED	1, 11, 21, -, -, 51, 61, ETC.
BLACK	2, 12, 22, -, -, 52, 62, ETC.
BLUE	3, 13, 23, -, -, 53, 63, ETC.
BROWN	4, 14, 24, -, -, 54, 64, ETC.
ORANGE	5, 15, 25, -, -, 55, 65, ETC.
PINK	6, 16, 26, -, -, 56, 66, ETC.
YELLOW	7, 17, 27, -, -, 57, 67, ETC.
GRAY	8, 18, 28, -, -, 58, 68, ETC.
TAN	9, 19, 29, -, -, 59, 69, ETC.
PURPLE	10, 20, 30, -, -, 60, 70, ETC.
WHITE	NEUTRAL
GREEN	GROUND

NOTES:
1. WIRE PER HANDY THREAD SCHEMATIC DRAWING NO B-4036 FOR STANDARD OPERATION.

A	7-1-98	R1V AUX. CONTACT, ADDED GRD WIRE
NO.	DATE	REVISION

POINT TO POINT		MATERIAL	
PART NO.	USE		
LIMITS ON DIMENSIONS DECIMAL ± .005 UNLESS FRACTIONAL ± 1/64 OTHERWISE SPECIFIED ANGULAR ± 1/2"		 AAA PRODUCTS INTERNATIONAL 7114 Harry Hines Blvd Dallas, TX 75235	
DRAWN: REM	DATE: 1-6-98		
SCALE: 3/4	SHEET:	RELEASED: REM	DATE: 1-8-98
TITLE: 230V-1 PH - PT TO PT HANDY THREAD			DRAWING NO.: B-4037-A


HT-1P Electrical Information (Standard 230 Volt - Single Phase)



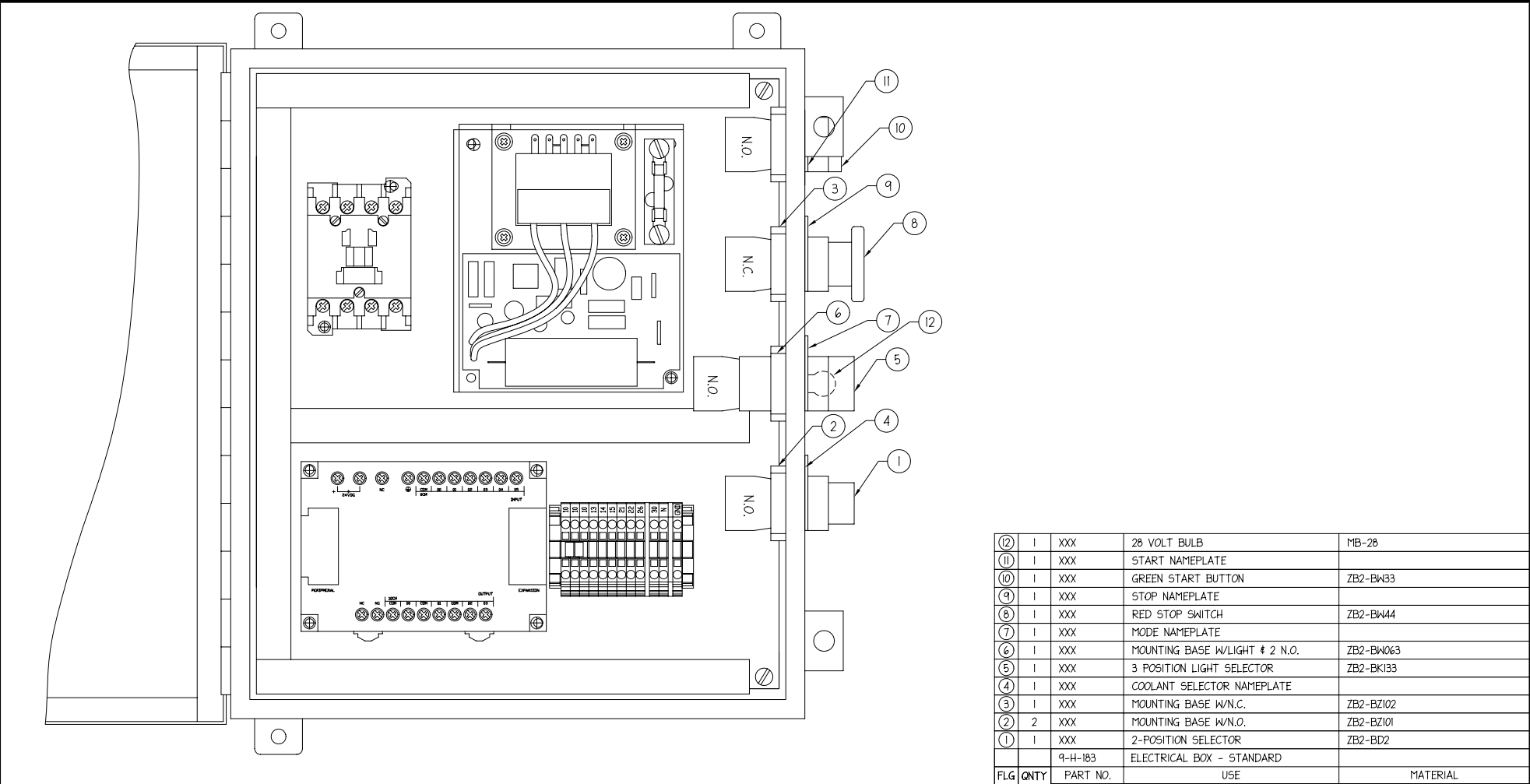
15	1	XXX	PANEL	A14P12
14	40"	XXX	PANUIT LID 1/2" WIDE	
13	40"	XXX	PANUIT 1/2x1-1/4	E.5x1.25
12	1	XXX	MOUNTING RAIL	199-DRI
11	AR	XXX	WIRE NUMBERS	209-501
10	1	XXX	MOTOR CONTACTOR	100A24NA3
9	2	XXX	END STOP	249-117
8	2	XXX	JUMPER	280-402
7	2	XXX	DIVIDER	280-331
6	1	XXX	GROUND TERMINAL	280-607
5	11	XXX	WIRE TERMINAL	280-601
4	1	XXX	POWER SUPPLY SLS-24-024	
3	1	XXX	FUSE	MDA-1
2	1	XXX	FUSE HOLDER	4512
1	1	XXX	PROGRAMMABLE CONTROL UNIT	CPMI-10CDR-D
			ELECTRICAL PANEL	
FLG	QNTY	PART NO.	USE	MATERIAL

NOTES:
 1. WIRE PER HANDY THREAD SCHEMATIC DRAWING NO B-4036 AND B-4037 FOR 230V OPERATION.
 2. SOME HARDWARE ITEMS (SCREWS, ADHESIVES, ETC.) ARE NOT LISTED.

A	7-1-98	RMV AUX. CONTACT, MODIFIED MAT. NUMBERS AND DESC.
NO.	DATE	REVISION

LIMITS ON DIMENSIONS DECIMAL ± .005 UNLESS OTHERWISE SPECIFIED FRACTIONAL ± 1/64 ANGULAR ± 1/2"		 AAA PRODUCTS INTERNATIONAL 7114 Harry Hines Blvd Dallas, TX 75235	
DRAWN: REM	DATE: 1-1-98	APPROVED: HW	DATE: 1-8-98
SCALE: 1/2	SHEET:	RELEASED: REM	DATE: 1-8-98
TITLE: 230 V ELECTRICAL PANEL HANDY THREAD			DRAWING NO.: B-4038-A

HT-1P Electrical Information (Standard 230 Volt - Single Phase)



NOTES:
 1. WIRE PER HANDY THREAD SCHEMATIC DRAWING NO. B-4032 AND B-4033 FOR STANDARD OPERATION
 2. WIRE PER HANDY THREAD SCHEMATIC DRAWING NO. B-4036 AND B-4037 FOR 230V OPERATION

FLG	QNTY	PART NO.	USE	MATERIAL
(12)	1	XXX	28 VOLT BULB	MB-28
(11)	1	XXX	START NAMEPLATE	
(10)	1	XXX	GREEN START BUTTON	ZB2-BW33
(9)	1	XXX	STOP NAMEPLATE	
(8)	1	XXX	RED STOP SWITCH	ZB2-BW44
(7)	1	XXX	MODE NAMEPLATE	
(6)	1	XXX	MOUNTING BASE W/LIGHT # 2 N.O.	ZB2-BW063
(5)	1	XXX	3 POSITION LIGHT SELECTOR	ZB2-BK133
(4)	1	XXX	COOLANT SELECTOR NAMEPLATE	
(3)	1	XXX	MOUNTING BASE W/N.C.	ZB2-BZ102
(2)	2	XXX	MOUNTING BASE W/N.O.	ZB2-BZ101
(1)	1	XXX	2-POSITION SELECTOR	ZB2-BD2
			9-H-183	ELECTRICAL BOX - STANDARD

A	7-1-98	RMV AUX. CONTACT MODIFIED SWITCH SPACING
NO.	DATE	REVISION

LIMITS ON DIMENSIONS DECIMAL ± .005 UNLESS FRACTIONAL ± 1/64 OTHERWISE SPECIFIED ANGULAR ± 1/2°		 AAA PRODUCTS INTERNATIONAL 7114 Harry Hines Blvd Dallas, TX 75235	
DRAWN: REM	DATE: 9-8-95		APPROVED: HW
SCALE: 1/2	SHEET:	RELEASED: HW	DATE: 9-25-95
TITLE: ELECT. BOX - STANDARD HANDY THREAD			DRAWING NO.: B-4035-A