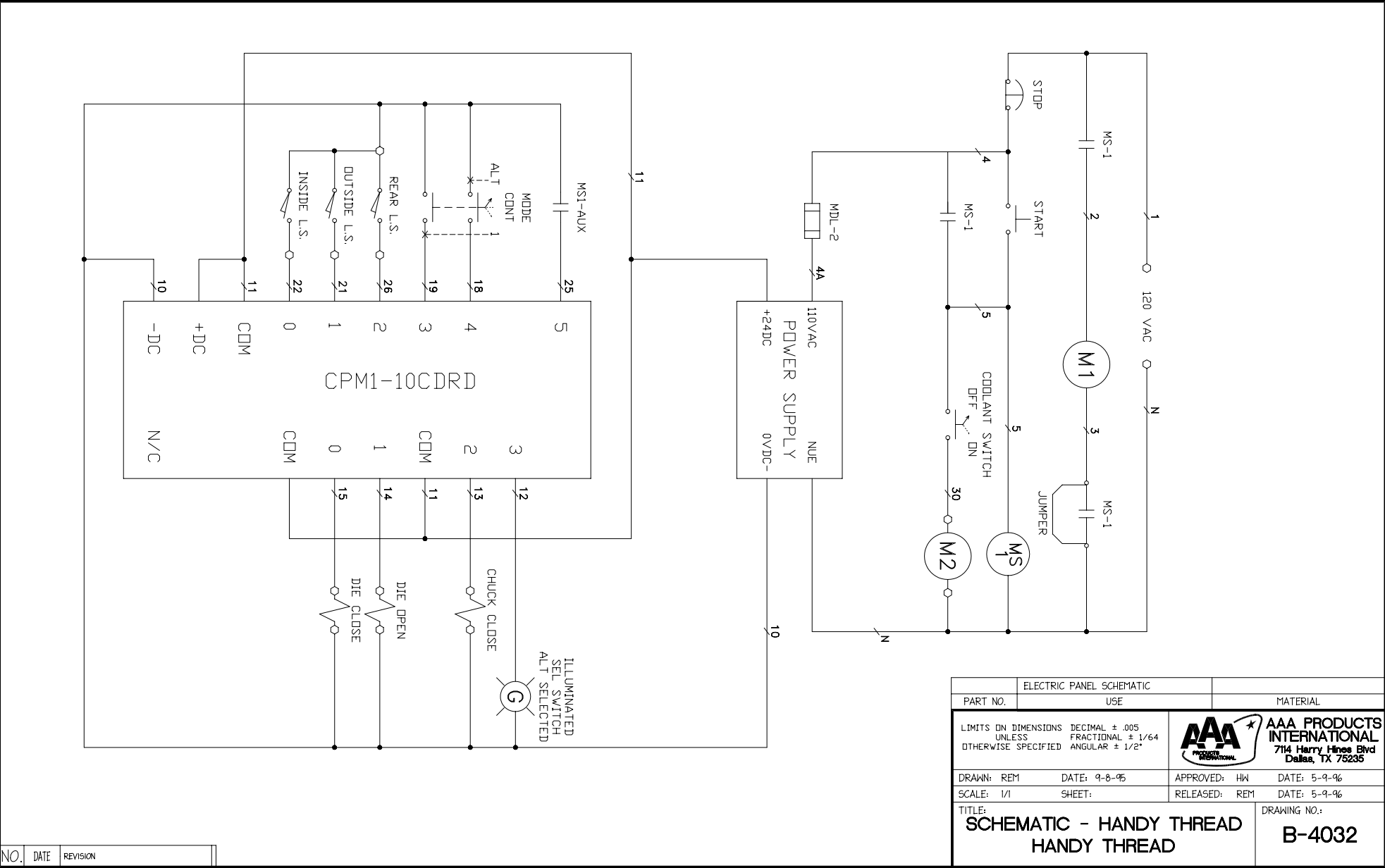



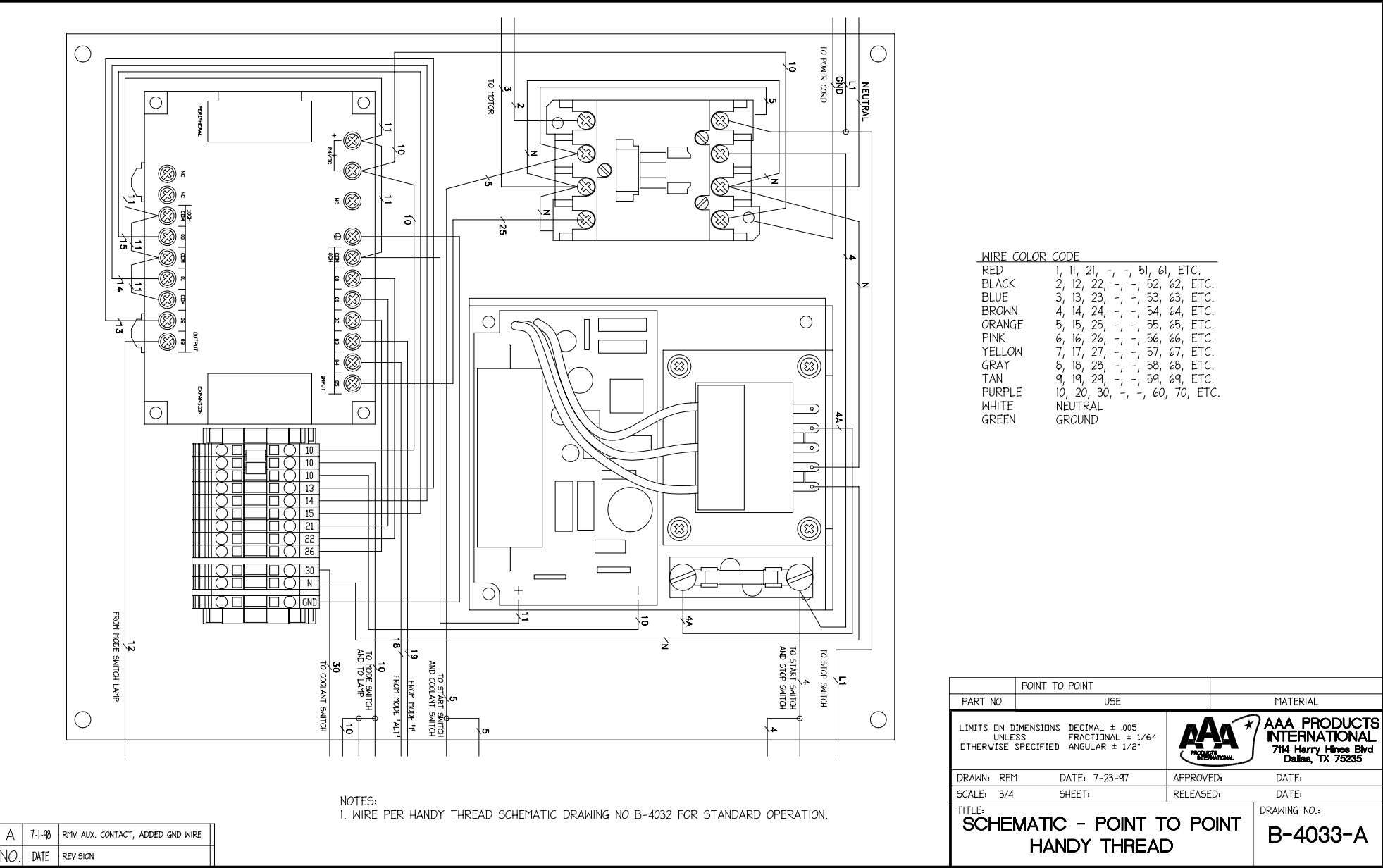
HT-1P Electrical Information (Standard 120 Volt - Single Phase)




ELECTRIC PANEL SCHEMATIC		MATERIAL	
PART NO.	USE		
LIMITS ON DIMENSIONS UNLESS OTHERWISE SPECIFIED		 AAA PRODUCTS INTERNATIONAL 7114 Harry Hines Blvd Dallas, TX 75235	
DECIMAL ± .005	FRACTIONAL ± 1/64	APPROVED: HW	DATE: 5-9-96
ANGULAR ± 1/2°		RELEASED: REM	DATE: 5-9-96
DRAWN: REM		DRAWING NO.: B-4032	
SCALE: 1/1			
SHEET:			
TITLE: SCHEMATIC - HANDY THREAD HANDY THREAD			

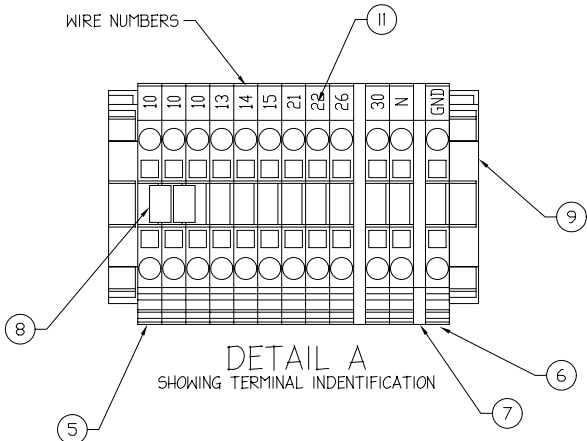
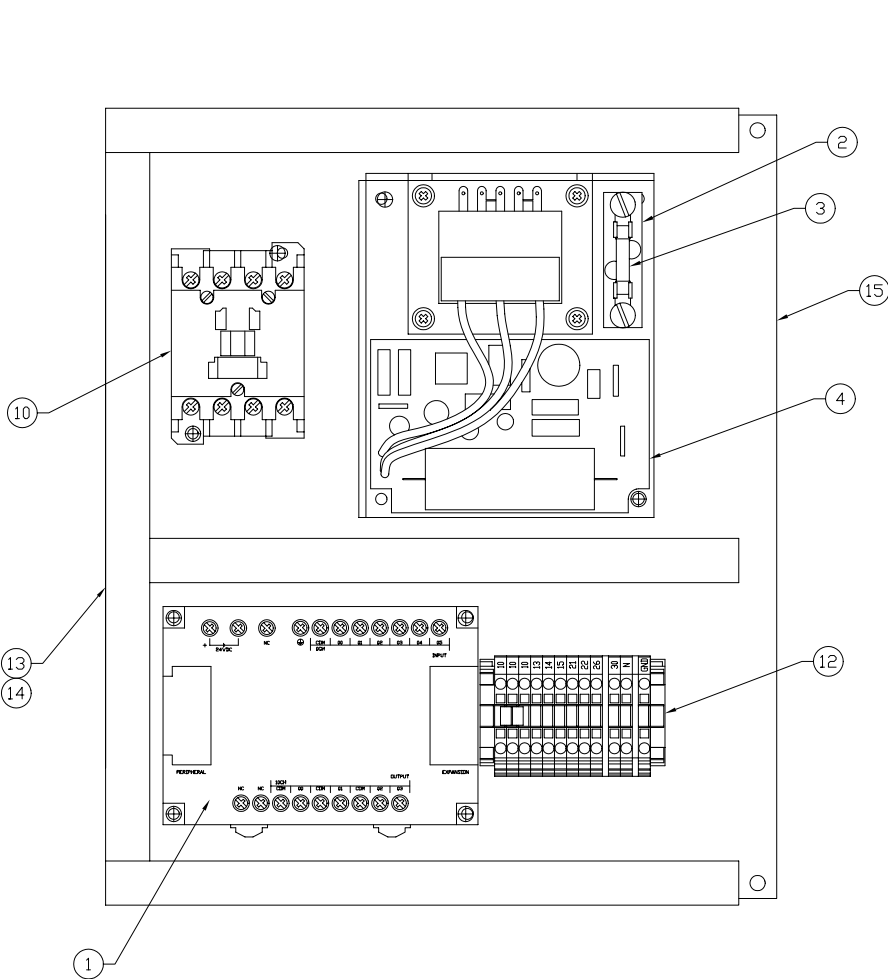
NO.	DATE	REVISION

HT-1P Electrical Information (Standard 120 Volt - Single Phase)



POINT TO POINT			
PART NO.	USE	MATERIAL	
LIMITS ON DIMENSIONS DECIMAL ± .005 UNLESS FRACTIONAL ± 1/64 OTHERWISE SPECIFIED ANGULAR ± 1/2"		 AAA PRODUCTS INTERNATIONAL 7114 Harry Hines Blvd Dallas, TX 75235	
DRAWN: REM	DATE: 7-23-97		
SCALE: 3/4	SHEET:	RELEASED:	DATE:
TITLE: SCHEMATIC - POINT TO POINT HANDY THREAD			DRAWING NO.: B-4033-A

HT-1P Electrical Information (Standard 120 Volt - Single Phase)



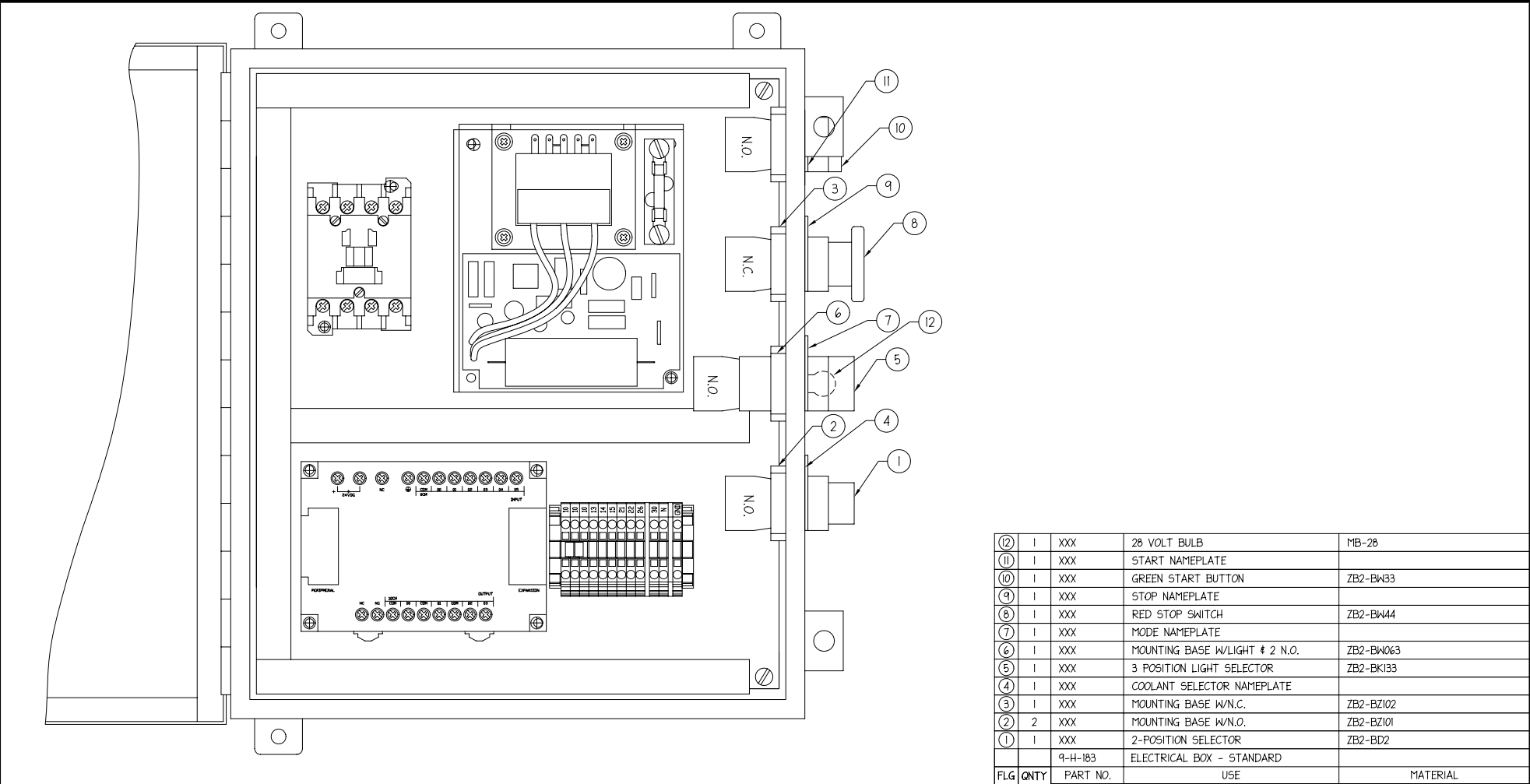
15	1	XXX	PANEL	A14P12
14	40"	XXX	PANUIT LID 1/2" WIDE	
13	40"	XXX	PANUIT 1/2x1-1/4	E.5x1.25
12	1	XXX	MOUNTING RAIL	199-DRI
11	AR	XXX	WIRE NUMBERS	209-501
10	1	XXX	MOTOR CONTACTOR	100A24ND3
9	2	XXX	END STOP	249-117
8	2	XXX	JUMPER	280-402
7	2	XXX	DIVIDER	280-331
6	1	XXX	GROUND TERMINAL	280-607
5	11	XXX	WIRE TERMINAL	280-601
4	1	XXX	POWER SUPPLY SLS-24-024	
3	1	XXX	FUSE	MDA-2
2	1	XXX	FUSE HOLDER	4512
1	1	XXX	PROGRAMMABLE CONTROL UNIT	CPMI-10CDR-D
			ELECTRICAL PANEL	
FLG	QNTY	PART NO.	USE	MATERIAL

NOTES:
 1. WIRE PER HANDY THREAD SCHEMATIC DRAWING NO B-4032 AND B-4033 FOR STANDARD OPERATION.
 2. SOME HARDWARE ITEMS (SCREWS, ADHESIVES, ETC.) ARE NOT LISTED.

A	7-1-98	RMV AUX. CONTACT, MODIFIED MAT. NUMBERS AND DESC.
NO.	DATE	REVISION

LIMITS ON DIMENSIONS DECIMAL ± .005 UNLESS OTHERWISE SPECIFIED FRACTIONAL ± 1/64 ANGULAR ± 1/2"		AAA PRODUCTS INTERNATIONAL 7114 Harry Hines Blvd Dallas, TX 75235
DRAWN: REM	DATE: 1-1-98	
SCALE: 1/2	SHEET:	RELEASED: DATE:
TITLE: ELECTRICAL PANEL HANDY THREAD		DRAWING NO.: B-4031-A

HT-1P Electrial Information (Standard 120 Volt - Single Phase)



NOTES:
 1. WIRE PER HANDY THREAD SCHEMATIC DRAWING NO. B-4032 AND B-4033 FOR STANDARD OPERATION
 2. WIRE PER HANDY THREAD SCHEMATIC DRAWING NO. B-4036 AND B-4037 FOR 230V OPERATION

FLG	QNTY	PART NO.	USE	MATERIAL
(12)	1	XXX	28 VOLT BULB	MB-28
(11)	1	XXX	START NAMEPLATE	
(10)	1	XXX	GREEN START BUTTON	ZB2-BW33
(9)	1	XXX	STOP NAMEPLATE	
(8)	1	XXX	RED STOP SWITCH	ZB2-BW44
(7)	1	XXX	MODE NAMEPLATE	
(6)	1	XXX	MOUNTING BASE w/LIGHT & 2 N.O.	ZB2-BW063
(5)	1	XXX	3 POSITION LIGHT SELECTOR	ZB2-BK133
(4)	1	XXX	COOLANT SELECTOR NAMEPLATE	
(3)	1	XXX	MOUNTING BASE w/N.C.	ZB2-BZ102
(2)	2	XXX	MOUNTING BASE w/N.O.	ZB2-BZ101
(1)	1	XXX	2-POSITION SELECTOR	ZB2-BD2
		9-H-183	ELECTRICAL BOX - STANDARD	

A	7-1-98	RMV AUX. CONTACT MODIFIED SWITCH SPACING
NO.	DATE	REVISION

LIMITS ON DIMENSIONS DECIMAL ± .005 UNLESS FRACTIONAL ± 1/64 OTHERWISE SPECIFIED ANGULAR ± 1/2°		 AAA PRODUCTS INTERNATIONAL 7114 Harry Hines Blvd Dallas, TX 75235	
DRAWN: REM	DATE: 9-8-95		APPROVED: HW
SCALE: 1/2	SHEET:	RELEASED: HW	DATE: 9-25-95
TITLE: ELECT. BOX - STANDARD HANDY THREAD			DRAWING NO.: B-4035-A