

TYPE SM - STACKING MANIFOLD

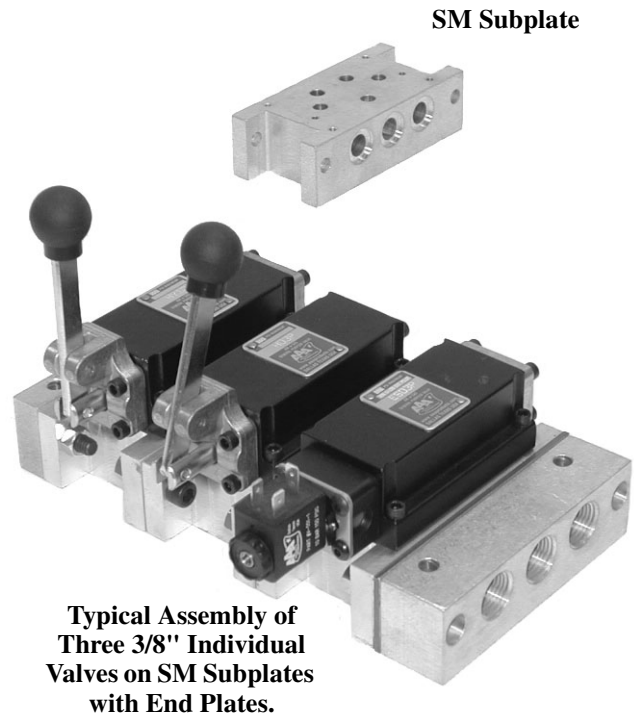
BOLT-TOGETHER SUBPLATES

For 3/8" Subplate-Type Valves - Body style 3P

These are individual subplates which can be bolted together to make a mounting surface (Or manifold) for any number of 3/8" individual subplate mounting valves. Inlet pressure and exhaust connections are made to port holes on the side or bottom of end plates and manifolded through to all subplates. Cylinder and pilot ports come out the bottom of each subplate.

Note: On long stacks, inlet and exhaust lines can be connected to both ends of stack to reduce internal flow resistance.

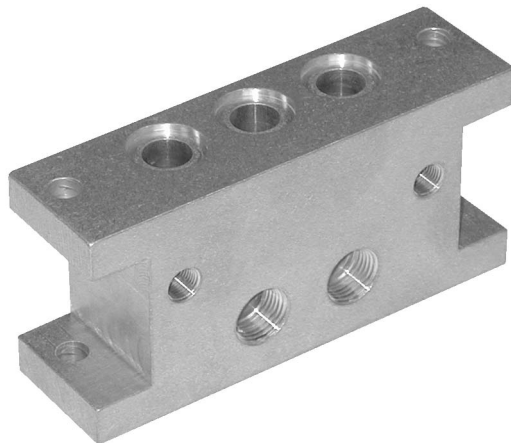
- SM2.** Subplate for valve mounting, with 1/4" NPTF bottom cylinder ports and 1/8" NPTF pilot ports. Includes screws and section O-ring seals.
- SM3.** Same as SM2 except with 3/8" NPTF bottom cylinder ports.
- SMSC-4.** End plate with 1/2" NPTF pressure and exhaust port holes coming out the side.
- SMBC-4.** End plate with 1/2" NPTF pressure and exhaust port holes coming out the bottom.
- SMBE-3.** Blind end plate. To cover either end of subplate assembly or can be used between subplates to separate pressure or media.
- SMOS.** Spacer. One must be used per assembly to support O-ring seals between first subplate and end plate.
- BP3-C.** Blanking plate with hardware. To cover a section when a valve is removed from the assembly and maintain the use of the assembly. Comes with mounting screws and O-rings to seal the section.



**Typical Assembly of
Three 3/8" Individual
Valves on SM Subplates
with End Plates.**

ASSEMBLY - The subplates are assembled using standard 5/16"-18 x 1-1/4" socket head cap screws, lock washers and nuts. Each SM2 or SM3 manifold includes hardware and seals for mounting manifolds together. Mounting hardware for assembling each subplate valve to the manifold is included with each subplate valve. You can use standard 5/8" I.D. x 13/16" O.D. Buna-N, 70 Durometer, O-rings between subplates, spacer plates or end plates. These O-rings can be ordered from AAA Products as part number V-110.

In the above right picture, the assembly would be as follows: starting at the rear of the stack, you use a SMBE-3 blind end plate, 3 V-110 O-rings seals (included with SMBE-3), SM2 or SM3 bottom ported subplate, 3 V-110 O-ring seals (included with SM2 or SM3), Bolt to SMBE-3 with included hardware. Continue assembling the desired number of subplates with O-rings between subplates, bolting each new subplate to the previous subplate. Finally, place a SMOS spacer with 3 V-110 O-rings between the spacer and the last subplate. Use included hardware to attach SMSC-4 side ported end plate with 3 V-110 O-rings between the end plate and the spacer. Choose the desired 3/8" subplate valves. (See pages 10 through 76 and pages 96 through 113; use body style 3P. Piston valves on pages 86 through 95 can not be used with stacking manifolds.) and mount them on the desired station using the hardware and O-rings included with each subplate valve.



**SM3 subplate showing 3/8"
NPTF cylinder ports and
1/8" NPTF pilot ports
located on the bottom of
the subplate.**